


**Product highlight**

- For corrosive process fluids and atmospheres
- Absolute pressure measurement
- Accuracy  $\pm 2\%$  FS
- Overpressure max. 25 bar
- Housing and wetted parts stainless steel
- Option: Liquid-filled for applications with pulsations or vibrations

**Technical data**
**Housing**

Protection rating (EN 60529) ■ IP65

Dial ■ White, aluminium

Pointer ■ Black, aluminium

 Safety according to EN 837-1 ■ S1  
 ■ Pressure gauge with blow-out device

Window material ■ Instrument glass

Window gasket ■ Elastomer

Movement material ■ Stainless steel

Nominal size ■ 150 mm

Case material ■ Stainless steel 1.4301 / AISI 304

Bezel ring material ■ Stainless steel 1.4301 / AISI 304

**Temperature**

 Ambient temperature ■  $-20^{\circ}\text{C} \dots +70^{\circ}\text{C}$ 

 Storage temperature ■  $-40^{\circ}\text{C} \dots +70^{\circ}\text{C}$ 

 Media temperature ■  $-40^{\circ}\text{C} \dots +200^{\circ}\text{C}$  (not filled)

**Wetted parts**

 Process connection ■ G1/2"  
 ■ 1/2" NPT

Process connection material ■ Stainless steel 1.4404 / AISI 316L

 Bellow ■ Stainless steel 1.4404 / AISI 316L  
 ■ 1 bellow process connected  
 ■ 1 bellow evacuated

**Performance**

 Accuracy ■  $\pm 2\%$  for standard ranges

Overpressure ■ Selectable, max. 25 bar

Type of pressure ■ Absolute

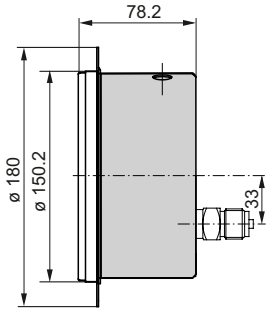
Min. measuring range ■ 0 ... 0.1 bar

Max. measuring range ■ 0 ... 16 bar

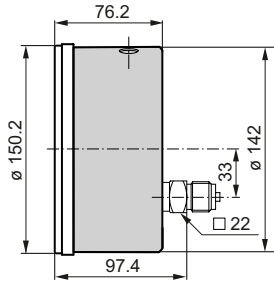
**Weight**

 Gauge ■ 2500 g filled  
 ■ 1600 g unfilled

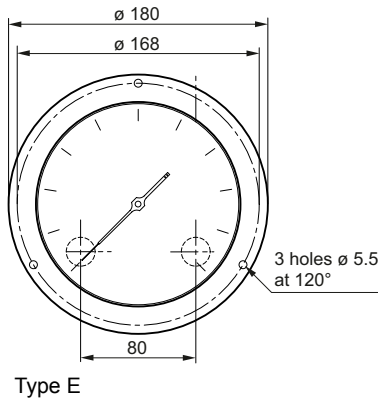
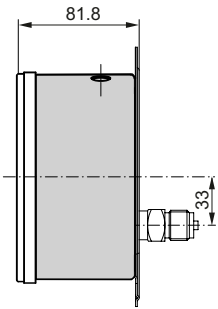
Technical drawings



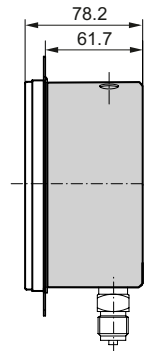
Type B



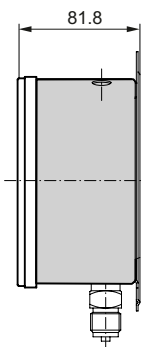
Type F



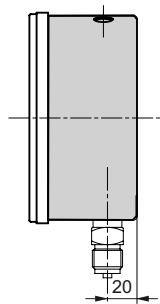
Type E



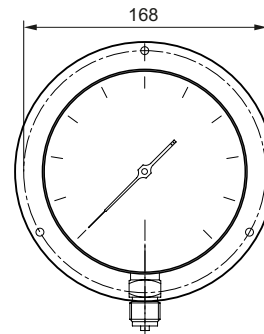
Type C



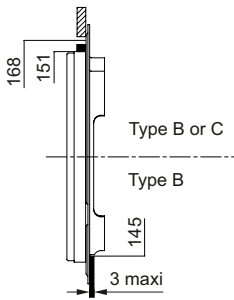
Type A



Type D



## Technical drawings



Panel cut-out

## Pressure Ranges

Code	Bar
B08	0 ... 0.1
B09	0 ... 0.16
B10	0 ... 0.25
B11	0 ... 0.4
B12	0 ... 0.6
B15	0 ... 1
B16	0 ... 1.6
B18	0 ... 2.5
B19	0 ... 4
B20	0 ... 6
B22	0 ... 10
B24	0 ... 16

Code	kPa
D08	0 ... 10
D09	0 ... 16
D10	0 ... 25
D11	0 ... 40
D12	0 ... 60
D15	0 ... 100
D16	0 ... 160
D18	0 ... 250
D19	0 ... 400
D20	0 ... 600
D22	0 ... 1 000
D24	0 ... 1 600

Code	kg/cm <sup>2</sup>
F08	0 ... 0.1
F09	0 ... 0.16
F10	0 ... 0.25
F11	0 ... 0.4
F12	0 ... 0.6
F15	0 ... 1
F16	0 ... 1.6
F18	0 ... 2.5
F19	0 ... 4
F20	0 ... 6
F22	0 ... 10
F24	0 ... 16

A	C	D	E	F	G	H	J	K
1)	1)							
1)	1)	1)						
•	•	•	•					
•	•	•	•	•				
•	•	•	•	•	•			
	•	•	•	•	•	•		
		•	•	•	•	•	•	
			•	•	•	•	•	•
				•	•	•	•	1)
					•	•	•	•
						•	•	•
							•	•

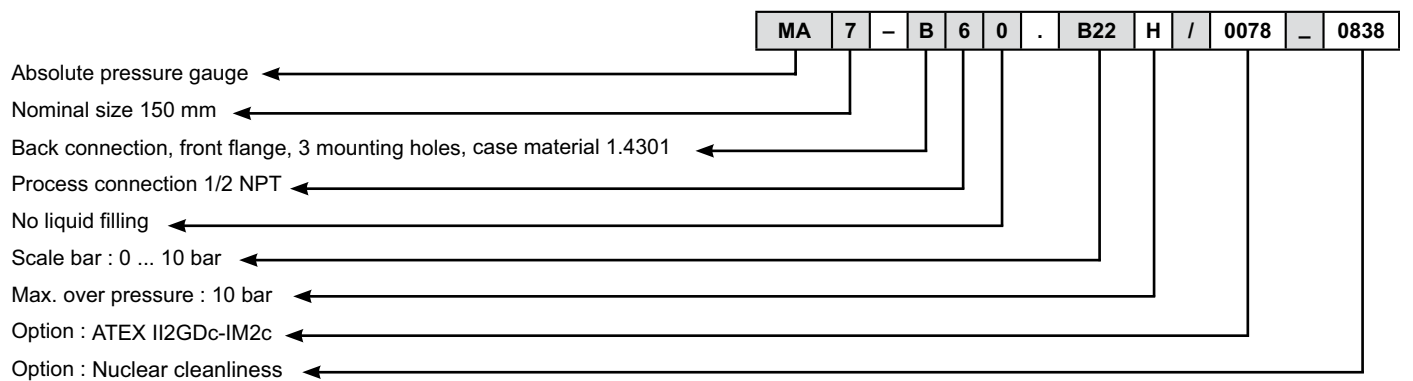
0.6	1	1.6	2.5	4	6	10	16	25
-----	---	-----	-----	---	---	----	----	----

## Configuration

	MA7	-	x	x	x	.	xxx	.	x
<b>Product</b>	MA7								
Absolut pressure gauge	MA7								
<b>Case</b>									
Bottom conn. , wall mounting	A								
Back conn., panel mounting	B								
Bottom conn., panel mounting	C								
Bottom connection	D								
Back connection, wall mounting	E								
Back connection	F								
Bottom connection, 2" pipe	P								
Bottom conn., wall mo 1.4404	1								
Back conn., panel mo 1.4404	2								
Bottom conn, panel mo 1.4404	3								
Bottom connction, 1.4404	4								
Back connection, wall m 1.4404	5								
Back connection, 1.4404	6								
Bottom connection, 2" pipe	8								
<b>Process connection</b>									
G 1/2	3								
1/2 - 14 NPT	6								
<b>Damping fluid</b>									
without	0								
BH1, Glyzerin 86 %	1								
BH2, Glyzerin 99 %	2								
Bh3, Silicone oil	3								
BH4	4								
BH5, Fluorinated oil	5								
<b>Measuring range</b>									
bar (EN standard)	Bxx								
kPa	Dxx								
MPa (EN standard)	Exx								
kg/cm2	Fxx								
Psi	Hxx								
mbar (EN standard)	Nxx								
<b>Max. overpressure</b>									
0,6 bar	A								
1 bar	C								
1,6 bar	D								
2,5 bar	E								
4 bar	F								
6 bar	G								
10 bar	H								
16 bar	J								
25 bar	K								

Stockitems

## Ordering example



EN/20151215 Design and specifications subject to change without notice