

## Overview

- For corrosive gasses and liquids
- Grade 2A (ASME B40.1)
- Solid front gauge
- Wetted parts: Stainless steel
- Case material: PBT
- Option: Liquid-filled for applications with pulsations or vibrations



Picture similar



## Technical data

### Housing

Nominal size	115 mm
Case material	PBT
Bezel ring material	PBT
Window material	Laminated safety glass
Window gasket	Elastomer
Protection rating (EN 60529)	IP67
Dial	White, aluminium
Pointer	Black, aluminium Adjustable micro metric pointer ( $P \geq 1.6$ bar)
Movement material	Stainless steel
Safety	Solid front gauge with solid front and pressure relief back

### Temperature

Ambient temperature	-20°C ... +70°C
Storage temperature	-40°C ... +40°C ,Code 40
Media temperature	-40°C ... +200°C (not filled)

### Wetted parts

Process connection material	Stainless steel 1.4404 / AISI 316L
-----------------------------	------------------------------------

### Wetted parts

Bourdon tube	Stainless steel 1.4404 / AISI 316L
--------------	------------------------------------

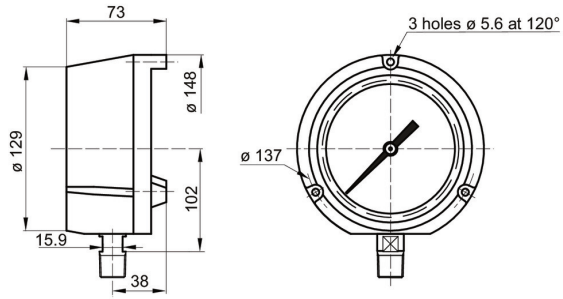
### Performance

Accuracy according to ASME B40.1	Grade 2A, $\pm 0.5\%$
Min. measuring range	0 ... 0.6 bar
Max. measuring range	0 ... 1600 bar
Type of pressure	Gauge Compound Vacuum
Pressure limitation (ranges $\leq 600$ bar)	Steady: 100 % of full scale value Fluctuating: 90 % of full scale value Short time: 130 % of full scale value
Pressure limitation (ranges $> 600$ bar)	Steady: 75 % of full scale value Fluctuating: 65 % of full scale value Short time: 100 % of full scale value
Thermal drift (reference: +20 °C)	$\pm 0.4\%$ FS/10K

### Weight

Gauge	680 g unfilled 1300 g filled
-------	---------------------------------

## Dimensional drawings (mm)



Type A / D

## Pressure ranges

Code	Bar
C59	-1 ... 0
C72	-1 ... 0.6
C74	-1 ... 1.5
C76	-1 ... 3
C77	-1 ... 5
C79	-1 ... 9
C81	-1 ... 15
C82	-1 ... 24
C12	0 ... 0.6
C15	0 ... 1
C16	0 ... 1.6
C18	0 ... 2.5
C19	0 ... 4
C20	0 ... 6
C22	0 ... 10
C24	0 ... 16
C26	0 ... 25
C27	0 ... 40
C29	0 ... 60
C31	0 ... 100
C33	0 ... 160
C35	0 ... 250
C38	0 ... 400
C39	0 ... 600
C41	0 ... 1 000
C42	0 ... 1 600

Code	kPa
D59	-100 ... 0
D72	-100 ... 60
D74	-100 ... 150
D76	-100 ... 300
D77	-100 ... 500
D79	-100 ... 900
D81	-100 ... 1 500
D82	-100 ... 2 400
D12	0 ... 60
D15	0 ... 100
D16	0 ... 160
D18	0 ... 250
D19	0 ... 400
D20	0 ... 600
D22	0 ... 1 000
D24	0 ... 1 600
D26	0 ... 2 500
D27	0 ... 4 000
D29	0 ... 6 000
D31	0 ... 10 000
D33	0 ... 16 000
D35	0 ... 25 000
D38	0 ... 40 000
D39	0 ... 60 000
D41	0 ... 100 000
D42	0 ... 160 000

Code	kg/cm <sup>2</sup>
F59	-1 ... 0
F72	-1 ... 0.6
F74	-1 ... 1.5
F76	-1 ... 3
F77	-1 ... 5
F79	-1 ... 9
F81	-1 ... 15
F82	-1 ... 24
F12	0 ... 0.6
F15	0 ... 1
F16	0 ... 1.6
F18	0 ... 2.5
F19	0 ... 4
F20	0 ... 6
F22	0 ... 10
F24	0 ... 16
F26	0 ... 25
F27	0 ... 40
F29	0 ... 60
F31	0 ... 100
F33	0 ... 160
F35	0 ... 250
F38	0 ... 400
F39	0 ... 600
F41	0 ... 1 000
F42	0 ... 1 600

Code	psi
H59	-30" Hg ... 0
H73	-30" Hg ... 15
H75	-30" Hg ... 30
H2C	-30" Hg ... 60
H78	-30" Hg ... 100
H79	-30" Hg ... 150
H81	-30" Hg ... 220
H82	-30" Hg ... 300
H13	0 ... 10
H15	0 ... 15
H1C	0 ... 20
H17	0 ... 30
H19	0 ... 60
H21	0 ... 100
H22	0 ... 160
H23	0 ... 200
H25	0 ... 300
H26	0 ... 400
H27	0 ... 600
H30	0 ... 1 000
H31	0 ... 1 500
H34	0 ... 3 000
H38	0 ... 6 000
H40	0 ... 10 000
H41	0 ... 15 000
H1D	0 ... 20 000

### Ordering reference

Ordering key - Configuration possibilities see website

	MPG6	-	#	#	#	.	####
<b>Product</b>	MPG6						
<b>Case</b>							
bottom connection, case 1.4301(304)							A
back fixing for wall mounting							
bottom connection							D
<b>Process connection</b>							
G 1/2							3
1/2 NPT							6
G 1/4							2
1/4 NPT							5
<b>Damping fluid<sup>(1)(2)</sup></b>							
without							0
BH1, Glycerin 86 %							1
BH2, Glycerin 99 %							2
BH3, Silicone oil							3
BH4, Silicone oil (for lower temperatures)							4
BH5, Fluorinated oil							5
<b>Measuring range</b>							
value long text							Cxx
kPa (EN)							Dxx
kg/cm2 (EN)							Fxx
psi (ANSI)							Hxx
bar/psi (EN)							Kxx
psi/bar (ANSI)							Sxx
psi/kPa (ANSI)							Vxx
MPa (EN)							Exx

(1) Pressure ranges x12 Grade 1A (dry) and B (with filling), not available with filling BH2

(2) Pressure ranges x59 and x15 not available with filling

### Ordering example

	MPG6	-	6	A	3	.	0	B22	/
<b>Product</b>	MPG6								
<b>Dimension</b>									
Nominal size 115 mm			6						
<b>Case</b>									
bottom connection, case 1.4301(304)				A					
back fixing for wall mounting									
<b>Process connection</b>									
G 1/2					3				
<b>Damping fluid</b>									
without							0		
<b>Measuring range</b>									
0 ... 10 bar (EN)								B22	

## Options

movement with dashpot <sup>(1)</sup>	0655	2.2 Certificate	Q002
For oxygen applications	0765	3.1 Material certificate	Q003
Restrictor screw 0,5 mm <sup>(2)</sup>	0771	3.1 Calib. cert 5 pts (rising)	Q008
Solid drawn bourdon tube	0816	3.1 Calib. cert 5 pts (EN837)	Q009
2.1 Certificate	Q001	3.1 Calib. cert 10 pts (EN837)	Q010

(1) P ≥ 1 bar

(2) For fittings > 1/4"